



The Health Services Authority is responsible for the provision and administration of primary and secondary levels of healthcare services and public health functions for residents of the three Cayman Islands through a 136-bed hospital on Grand Cayman, a 18-bed hospital in Cayman Brac, satellite outpatient clinic in Little Cayman and four District Health Centers on Grand Cayman offering the most comprehensive range of inpatient and outpatient services in a single health system in the Cayman Islands.

We invite applications for the following position:

PARAMEDIC
(Faith Hospital)

Salary range: CI\$75,228 – CI\$101,160 per annum

Job Summary: The candidate provides advanced pre-hospital emergency care and transportation in accordance with the protocols, policies, and procedures of the Cayman Islands EMS. He/she conducts thorough patient assessments, recognizing the nature and seriousness of illnesses or injuries, and determine the requirements for emergency medical care. Completes all patient care documentation on time. Ensures patient confidentiality and the expectations of the organization. Demonstrates clinical competencies within his or her scope of practice as a Paramedic. Operate the emergency vehicle to and from scenes in a safe, timely, and lawful manner while exercising due care and attention. Adhere to the use of personal protective equipment in hazardous or dangerous situations, including employing body substance isolation precautions. Providing oversight and scene safety, determining the needs of those involved in an incident, and communicate relevant information. Check, clean, and restock equipment before and after each use. Must be able to perform lifting and handling of patients and equipment.

Qualifications and Experience: The successful applicant must be currently registered Paramedic within one of the following seven jurisdictions, the United States, United Kingdom, Canada, Jamaica, Australia, New Zealand, our South Africa, to be license eligible to work in the Cayman Islands. The applicant must have a minimum of three (3) years current EMS experience. He/she should have two (2) years of current ACLS clinical experience in a conventional EMS system and have demonstrated the ability to perform efficiently both physically and mentally as required. Other certifications or requirements include current BLS, ACLS, PALS (within six months of hire), and a group 3-4 local driver's license are required.

A remuneration and benefits package, commensurate with experience and qualifications, will be offered to the successful candidate.

NOTE: Incomplete applications will not be considered. All applicants must complete and submit an HSA Application Form via e-mail to hsa.jobs@hsa.ky using pdf format. Log on to our website at www.hsa.ky to access Application Form and Job Description

Application deadline: July 12, 2026

Committed to Caring for You



Job Description

Job title	Paramedic	Job Holder	
Reports to	Support Services Manager	Section	EMS

Background Information

The Cayman Islands Health Services Authority (“HSA”) provides and administers health care services and public health functions for residents of the Cayman Islands in accordance with the National Strategic Plan for Health.

Services are delivered primarily through the 136-beds at the Cayman Islands Hospital (the country’s principal health care facility), and the 18-beds at the Faith Hospital on Cayman Brac. Ancillary services are offered at district health centers, and clinics for dental and ophthalmologic care. Residents of Little Cayman can access care through the island’s clinic which is a purpose-built facility.

The Emergency Medical Services (Ambulance) is the primary provider of Pre-Hospital care and transport to all resident and visitors to our Island.

This position plays a key role in the response and treatment of the sick and injured. The Paramedic service as the highest trained provider in the delivery of advance medical care in the out of Hospital environment.

Job purpose

To provide advanced pre-hospital emergency care and transportation in accordance with the protocols, policies, and procedures of the Cayman Islands EMS. In addition, provide routine transport to and from Hospital facilities as and when required. Above all the post holders will act as a role model for EMS staff and ensure their daily activities reflect the mission, goals, and objectives of Cayman Islands EMS.

Dimensions

- The Paramedic has clinical responsibility for his own actions and is expected to supervise and advise less experienced staff
- The Paramedic will assume clinical responsibility at the scene of an incident until relieved by a senior staff member
- The Paramedic has no budgetary responsibility
- All duties must be carried out in accordance with the Protocol, Policies and Procedures Manual of the Cayman Islands EMS.

- The Paramedic is responsible for the safe storage, use and disposal of all medications including controlled/dangerous drugs issued to him or in his care during his tour of duty.

Duties and responsibilities

Strategic Management

- A. To ensure his or her own safety and the safety of fellow workers.
- B. To drive the emergency vehicle to and from the scene in a safe, timely, and lawful manner while exercising due regard for others.
- C. To provide routine non-emergency transport.
- D. To use protective equipment in hazardous or dangerous situations including employing body substance isolation precautions
- E. To interact with first responders who are already on the scene providing care.
- F. To initially control the scene, ensuring safety, and regulating access to potentially harmful situations until the arrival of other emergency services or a Senior Ambulance Officer
- G. To determine the needs of those involved in the incident and communicate that information to 911, including requesting the response of and coordinating with supportive agencies as needed.
- H. To use basic tools and procedures to gain access to and extricate entrapped patients
- I. To establish rapport with patients, maintaining their confidentiality and shielding them from onlookers.
- J. To treat patients with appropriate dignity, compassion, and respect.
- K. To rapidly assess and manage life-threatening illnesses and injuries
- L. To perform a thorough patient assessment, recognizing the nature and seriousness of illnesses or injuries, and determine the requirements for emergency medical care.
- M. Within the confines of given protocols provide prompt and efficient advanced life support for illnesses or injuries
- N. To assess the effects of treatment
- O. To establish communications with medical direction, including physician consultation, when needed.
- P. To recognize when the limits of field care have been reached and when prompt transportation to a medical facility is needed.
- Q. To lift, move, position, and handle patients in such a way as to minimize discomfort and further injury, including spinal immobilization, splinting, and proper lifting and handling techniques.

- R. To transfer care of patients to the emergency department staff in an orderly and efficient manner.
- S. To properly complete the Patient Treatment Form for all patients carried.
- T. To properly complete all paperwork required by Ambulance Service Policies and Procedures.
- U. To clean and maintain all equipment in proper working order.
- V. To follow established protocols when patient transport is not warranted or is refused.

Staff Management

- The Paramedic is expected to assist in the training and clinical supervision of junior members of staff.

Compliance monitoring and reporting

- The EMT Intermediate is responsible for the completion of all required documentation set forth by the EMS Department.
- The post holder is responsible for the reporting of all defective equipment in a timely manner utilizing the appropriate form.
- The post holder is responsible in responding to all calls for service in a timely manner
- The post holder is responsible in reporting any untoward activities, including victimization, workplace bullying etc.
- The post holder when operating the Emergency vehicle shall comply with the Traffic Laws of the Cayman Islands

Communication

- Manage communication via Radio with 911 Communications and varying other emergency and NGO agencies.
- Communicate with patients, patient family member, and internal work groups on key matters.
- Work to develop and maintain effective working relationships with other emergency services, to improve the effectiveness of the service.
- Act as point of contact for external Mass Casualty Incidents and Disaster Management.
- Other duties as assigned.

Qualifications, Experience & Skills Requirement

Education and Experience Requirements:

- High School Graduate – passes in English, Maths and Science
- EMT Licensure prior to Paramedic Training (One year's training)
- Paramedic Registration with the Cayman Islands Health Practitioners Board
- Paramedic Licensure with the National Registry of EMT's, State Registry at EMT-P level or Registered with one of the seven Jurisdictions identified by the HPC.

Performance Requirements:

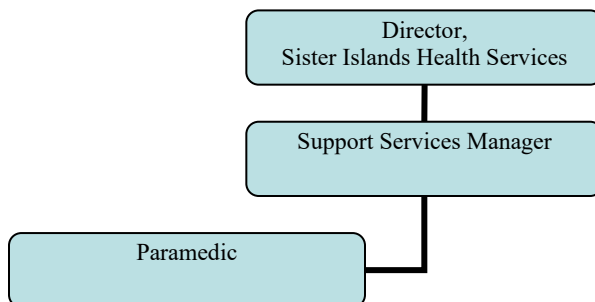
Knowledge:

- Working knowledge of the vehicle operations (Emergency Vehicle).
- Working knowledge of medical equipment on the ambulance.
- Working knowledge of Patient Care Policies and procedures as outlined by the Cayman Islands EMS.
- Working knowledge of patient registration, billing and documentation in Cerner.
- Preferably working knowledgeable of Cayman Islands Health care legislation.
- Familiarity with medical and pharmaceutical terminology and the willingness to learn.

Skills and abilities:

- Have a minimum of three years current EMS experience
- Have demonstrated ability to perform efficiently in high stress situations
- Be proficient in the use of all equipment utilized in EMS
- Be proficient in all areas relevant to EMS
- Excellent people skills and solid communication and presentation skills.
- Ability to effectively interact with patients, other professionals including physicians and clinical leadership.
- Leadership skills to motivate cross-departmental teams and achieve the desired performance.
- Ability to be a strong advocate on the HSA's behalf in the pursuit of goals and objectives.
- Adult and Pediatric Advanced Life Support training and certification
- Must be able to organise self and respond immediately to EMS calls
- Experience using a CERNER IT system or other hospital software would be an asset.

Reporting Relationship



Other Working Relationships

- EMT's (B&I)
- PARAMEDICS
- Physicians
- Other Emergency Services
- NGO's (Red Cross, ADRA etc)
- Nurses
- Other Clinical Staff
- 911 Communication

Decision Making Authority and Controls

Can initiate treatment of patients within the scope of their training and experience and within the protocols, policies, and procedures of Cayman Islands EMS

Counselling and directing staff as necessary to maintain the standards laid down in the Protocols, Policies and Procedures of Cayman Islands EMS

Prepare clinical evaluations of co-workers as and when requested to by EMS Management.

Working conditions

This is a pre-Hospital position on 12 hour rotating shift.

High risk of exposure to communicable disease as the Paramedic is required to deal regularly with blood and/ or other body fluids both in the field and the Emergency Room.

High risk of back and shoulder injury from lifting and handling patients in confined spaces

Prehospital care is a highly stressful occupation which can lead to physical or psychological effects on the Paramedic.

The Paramedic is required to perform his/her duties during adverse weather or other adverse environmental condition

The Paramedic is required to respond to scenes which may contain an element of actual or potential risk to their person.

Physical requirements

The position requires the incumbent to stand and/or walk for extended periods of time, do repetitive tasks with few breaks, and so forth. The Paramedic is also expected to be able to lift and move patients and equipment (heavy weights) and to work under stressful conditions. Deep cleaning of the ambulance and equipment is also required of the Paramedic.

Problem/Key Features

The position requires the post-holder to effectively manage stress in a high paced, periodically unstable, and dangerous environment, and manage unstable scenes.

The position also requires work outside of normal business hours. The requirements of the position are time sensitive and requires excellent planning and time management skills.

Evaluation Metrics

- Attendance and submissions
- Clinical audits
- Documentation
- Completion of all patient care reports and billing
- Vehicle check sheets

Approved by:	<i>Director of Sister Islands</i>
Date approved:	<i>30 November 2025</i>
Employee Signature/Date:	
Manager Signature/Date:	