



The Cayman Islands Health Services Authority, is the principal healthcare service provider in the Cayman Islands, offering the most comprehensive range of inpatient, outpatient and public health services through a 127-bed hospital and four District Health Centres on Grand Cayman, an 18-bed hospital in Cayman Brac and a satellite outpatient clinic in Little Cayman.

**We invite applications for the following position:**

### **HEALTHCARE AIDES**

**(Mental Health, Dialysis, Specialist Clinic)**

**Salary range: CI\$38,436- CI\$51,732 per annum**

**The Health Care Aide is a non-licensed health care provider who assists the Registered Nurse and Registered Nursing Assistant to deliver nursing care to individuals in the hospital.**

**Primary Responsibilities:** The successful candidate provides direct physical care to selected patients under supervision of a nurse. He/she assists, and feeds patient requiring help and provides extra nourishment between meals and fresh water, as necessary. Also assists with lifting, positioning, moving and ambulating patients. The candidates take and records vital signs and maintains fluid balance charts. Transports patients by wheelchair, stretcher or bed and escorts ambulatory patients around the facility, as necessary. The candidate also responds to patient calls, determining and meeting patient's needs and/or reporting patients' concerns and requests to the nurse. He/she assists with patient baths and meeting personal hygiene needs to increase comfort and well-being of the patient. Communicates information and basic instructions to patients, families, and visitors.

**Qualifications and Experience:** The successful candidate must possess a Healthcare Aide Certificate and possess a High School diploma or equivalent. The candidate must also have a valid CPR Certificate and be computer literate. Previous experience within Mental Health services would be an asset. Must demonstrate the ability to use and comprehend oral and written English. Workload and assignments are determined by the assigned area and the licensed personnel with whom candidate is assigned. The successful candidate must exhibit a caring and compassionate attitude, respecting diversity of religion, race, culture, gender, sexual orientation, and medical diagnosis. The ability to work weekends, evening and holiday shifts is essential.

**A remuneration and benefits package, commensurate with experience and qualifications will be offered to the successful candidate.**

**NOTE: Incomplete applications will not be considered. All applicants must complete and submit an HSA Application Form via e-mail to [hsa.jobs@hsa.ky](mailto:hsa.jobs@hsa.ky) using pdf format. Log on to our website at [www.hsa.ky](http://www.hsa.ky) to access Application Form and Job Description.**

**Application Deadline: February 8, 2026**

*Committed to Caring for You*



## JOB DESCRIPTION

Job Title: Health Care Aide	Reports To:	Charge Nurse/Nurse Manager
Job Holder:	Cost Centre:	Nursing Administration

### BACKGROUND INFORMATION

The Cayman Islands Health Services Authority (“HSA”) provides and administers health care services and public health functions for residents of the Cayman Islands in accordance with the National Strategic Plan for Health.

Services are delivered primarily through the 127-beds at the Cayman Islands Hospital (the country’s principal health care facility), and the 18-beds at the Faith Hospital on Cayman Brac. Ancillary services are offered at district health centres, and clinics for dental and ophthalmologic care. Residents of Little Cayman can access care through the island’s clinic, which is a purpose-built facility.

Postholder works in a patient care unit within the hospital. Provides basic nursing care to patients with their scope of abilities and performs other miscellaneous duties as assigned. Post holder should employ core values of the organization in their interaction with the organization customer and guest.

### JOB PURPOSE

The Health Care Assistant is a non-licensed health care provider who assists the Registered Nurse and Registered Nursing Assistant to deliver nursing care to individuals in the hospital.

---

### DIMENSIONS

- Post holder has no budgetary responsibility
- Post holder has no supervisory responsibility

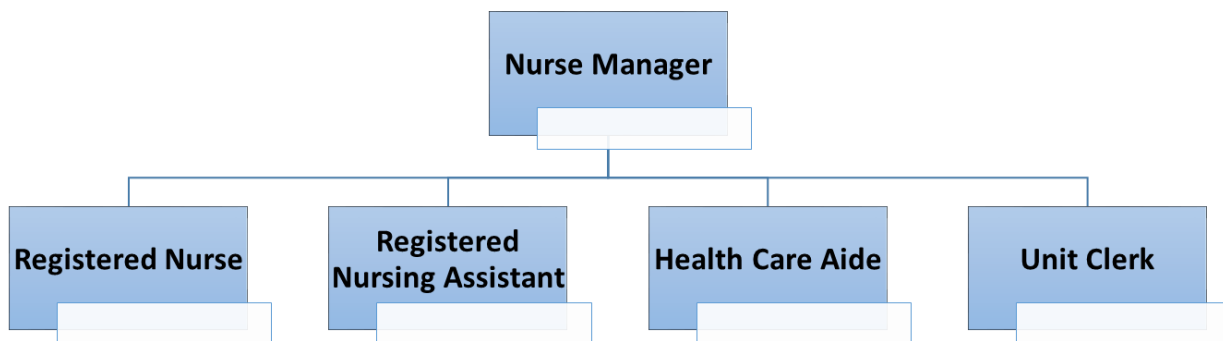
---

### PRINCIPAL ACCOUNTABILITIES

- Provides direct physical care to selected patients under supervision of a nurse
- Assists and feeds patient requiring help, and provides extra nourishment between meals and fresh water as necessary
- Assists with lifting, positioning, moving and ambulating patients
- Takes and records vital signs and maintains fluid balance charts
- Transports patients by wheel chair, stretcher or bed and escorts ambulatory patients around the facility as necessary.
- Responds to patient calls, determining and meeting patient’s needs and/or reporting patients’ concerns and requests to the nurse

- G. Assists with baths and meeting personal hygiene to increase comfort and well-being of the patient.
  - H. Communicates information and basic instructions to patients, families and visitors
  - I. Participates in exchange of patient daily report and nursing care conferences
  - J. Monitors the safety of patients, visitors and others
  - K. Participates in occupational and educational activities as needed
  - L. Assists patients with activities of daily living
  - M. Maintains a neat and clean patient and service area
  - N. Prepares unit for admission and/or discharge
  - O. Cleans equipment as directed
  - P. Maintains positive interpersonal skills with patients, visitors and staff (managers spend long hours educating non-clinical staff on this).
  - Q. Performs miscellaneous duties as assigned e.g sitter duty
- 

## ORGANISATION CHART



## KNOWLEDGE, EXPERIENCE AND SKILLS

- Healthcare Aide Certificate  
High School diploma or equivalent  
CPR Certificate.

### Post holder must:

- Have basic Windows skills
  - Demonstrate the ability to use and comprehend oral and written English
  - Exhibit a caring and compassionate attitude, respecting diversity of religion, race, culture, gender, sexual orientation and medical diagnosis.
-

---

**ASSIGNMENT AND PLANNING OF WORK**

- Workload and assignments are determined by the assigned area
- Work is assigned by the licensed personnel with whom post holder works

---

**SUPERVISION OF OTHERS**

None

---

**OTHER WORKING RELATIONSHIPS**

All member of the health care team

---

**DECISION MAKING AUTHORITY AND CONTROLS**

Post holder has no decision-making responsibility.

---

**PROBLEM/KEY FEATURES**

- Long hours standing/walking/lifting.
- 

---

**WORKING CONDITIONS**

- Unsocial hours in some areas
- Volume and pace of work vary according to assigned area

---

<b>Approved by:</b>	<i>Nurse Manager</i>
<b>Date approved:</b>	<i>September 2017</i>
<b>Reviewed:</b>	<i>December 2, 2022</i>
<b>Next Review</b>	<i>December 2, 2025</i>
<b>Employee Sig/Date:</b>	
<b>Manager Sig/Date:</b>	