



The Cayman Islands Health Services Authority, is the principal healthcare service provider in the Cayman Islands, offering the most comprehensive range of inpatient, outpatient and public health services through a 127-bed hospital and four District Health Centres on Grand Cayman, an 18-bed hospital in Cayman Brac and a satellite outpatient clinic in Little Cayman.

We invite applications for the following position:

BIOMEDICAL ENGINEER

Salary range: CI\$75,228 – CI\$101,160 per annum

The Biomedical Engineer is required to install, inspect, troubleshoot, repair, calibrate, and verify the performance of complex biomedical equipment with minimal supervision. The individual should be competent in the use of all applicable test equipment and tools required in the performance of these duties. The Biomedical Engineer is responsible for the operational reliability and maintenance of biomedical equipment for safe patient care operations at all HSA clinical sites including Faith Hospital in Cayman Brac and the Little Cayman Clinic.

Primary Responsibilities: The successful candidate is responsible for maintaining a safe and healthy working environment by conducting incoming inspection of new equipment, installation, corrective, and preventive maintenance safety tests, recommending, and complying with procedures, training, and guiding medical and healthcare personnel and complying with codes. Perform performance assurance (PA) inspections, scheduled maintenance, electrical safety inspections (ESI), and operation verification procedures (OVP) on complex and intricate biomedical equipment. Repair, install, and calibrate complex and intricate biomedical equipment, Inform the Facilities Manager of the status of repairs, scheduled inspections, unusual equipment situations, and any concerns. Work with, direct, and document the activities of subcontractors, vendors, and outside service technicians to ensure proper service delivery Monitors work performed by outside contractors for equipment under service agreements to ensure requirements are met and results are documented properly Maintain biomedical expertise through ongoing training and education Assist with Service Operations Special Projects as assigned On-Call rotation and flexible work time may be required. Travel to Faith Hospital and District Health Centres will be required.

Qualifications and Experience: The successful candidate must have a minimum qualification of a Bachelor Degree in a related area (Electronic Engineering Technology or Biomedical Engineering Technology or equivalent) and at least two (2) years' working experience with biomedical equipment in a clinical engineering environment preferred OR eight (8) years working experience in various Biomedical Sciences preferably in a clinical environment. Oral and written fluency in English – working knowledge of a second language (preferably Spanish) is a plus.

A remuneration and benefits package, commensurate with experience and qualifications will be offered to the successful candidate.

NOTE: Incomplete applications will not be considered. All applicants must complete and submit an HSA Application Form via e-mail to hsa.jobs@hsa.ky using pdf format. Log on to our website at www.hsa.ky to access Application Form and Job Description.

Application Deadline: February 23rd, 2025



Job Description

Job title	Biomedical Engineer	Job Holder	
Reports to	Facilities Manager	Section	Facilities Department

Background Information

The Cayman Islands Health Services Authority (“HSA”) provides and administers health care services and public health functions for residents of the Cayman Islands in accordance with the National Strategic Plan for Health.

Services are delivered primarily through the 124-beds at the Cayman Islands Hospital (the country’s principal health care facility), and the 18-beds at the Faith Hospital on Cayman Brac. Ancillary services are offered at district health centres, and clinics for dental and ophthalmologic care. Residents of Little Cayman can access care through the island’s clinic which is a purpose-built facility.

The Biomedical Engineer is required to install, inspect, troubleshoot, repair, calibrate, and verify the performance of complex biomedical equipment with minimal supervision. The individual should be competent in the use of all applicable test equipment and tools required in the performance of these duties.

The Biomedical Engineer may serve as technical advisor to the medical and clinical staff in the safe operation and use of clinical equipment. This position also assists in developing specifications for the selection of new clinical equipment. The individual

The Biomedical Engineer is responsible for the operational reliability and maintenance of biomedical equipment for safe patient care operations at all HSA clinical sites including Faith Hospital in Cayman Brac and the Little Cayman Clinic.

Job purpose

Responsible for ensuring proper functioning, safety and sound condition of all medical equipment in the HSA and that they are in optimum maintenance condition and available for use in the delivery of safe patient care.

Dimensions

- Postholder has no supervisory responsibilities
- Postholder is not responsible for a budget.

Duties and responsibilities

Technical Service

- Perform performance assurance (PA) inspections, scheduled maintenance, electrical safety inspections (ESI), and operation verification procedures (OVP) on complex and intricate biomedical equipment

- Maintains safe and healthy working environment by conducting incoming inspection of new equipment, installation, corrective and preventive maintenance safety tests, recommending and complying with procedures, training and guiding medical and healthcare personnel and complying with codes.
- Repair, install, and calibrate complex and intricate biomedical equipment
- Inform the Facilities Manager of the status of repairs, scheduled inspections, unusual equipment situations, and any concerns
- Work with, direct, and document the activities of subcontractors, vendors, and outside service technicians to ensure proper service delivery
- Monitors work performed by outside contractors for equipment under service agreements to ensure requirements are met and results are documented properly.
- Maintain biomedical expertise through ongoing training and education
- Assist with Service Operations Special Projects as assigned
- On-Call rotation and flexible work time may be required.
- Travel to Faith Hospital and District Health Centres will be required.

Regulatory Compliance

- Maintains records to ensure compliance with Joint Commission requirements.
- Ensure the accuracy and integrity of the equipment database to include the inventory, performance assurance (PA) schedules, nomenclature, naming conventions and service history
- Adhere to the Medical Equipment Management Plan (MEMP), including all regulatory agency compliances and other applicable policies and procedures
- Responsible for ensuring all service and documentation is complete, timely, and accurate

Department Relationship Management

- Build and maintain customer relationships
- Discuss equipment status and functionality with clinicians
- Adhere to the Mission, Vision, and Core Values of the HSA.

Inventory

- Perform periodic inspections of current inventory status
- Perform Incoming Inspections to maintain a complete and accurate inventory of medical devices, including trial and evaluation, rental, and loaner equipment in addition to permanently assigned equipment inventory.
- Maintain the accuracy and integrity of the equipment database to include inventory, nomenclature, and service history
- Make recommendations regarding inventory

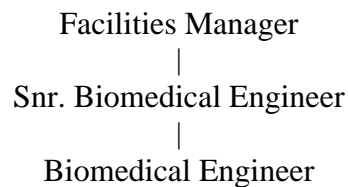
Qualifications, Experience & Skills Requirement

- Bachelor's Degree in a relative area (Electronic Engineering equivalent training Technology or Biomedical Engineering Technology or equivalent) AND
- Minimum of two (2) years working experience working with biomedical equipment in a clinical engineering environment preferred OR
- Eight (8) years working experience in various Biomedical Sciences preferably in a clinical environment.
- Oral and written fluency in English – working knowledge of a second language (preferably Spanish is a plus.)

Reporting Relationship

- The postholder reports directly to Snr. Biomedical Engineer and liaises internally with all section supervisors, staff and physicians, externally with contractors, vendors and manufacturers.
- Works closely with other departments and administration. Negotiates priorities, plans work schedules, makes job assignments, and orders needed materials, supplies and parts. Recommends uses of outside speciality contractors as circumstances indicate.

Direct reports



Other Working Relationships

The postholder works collaboratively with the Snr. Biomedical Engineer, the Facilities Manager, Clinical Managers, Physicians and other clinical support staff throughout the organisation in carrying out their daily functions.

Decision Making Authority and Controls

The Biomedical Engineer is under the direction of the Facilities Manager who is responsible for the direct supervision of all maintenance personnel. Postholder is responsible for working within the boundaries of the recurrent operating budget.

Working conditions

- Due to the need to ensure optimal performance of equipment for patient care operations it is not uncommon for the post holder to be subject to varying and unpredictable situations, many interruptions, long irregular hours, multiple calls and inquiries and be on call.
- The postholder will occasionally work near moving mechanical parts; in high precarious places; in outside weather conditions; is occasionally exposed to extreme heat, extreme cold, wet and/or humid conditions, fumes or airborne particles, toxic or caustic chemicals, risk of electrical shock, risk of radiation, hazardous and biohazardous waste, moderated to which noise level and vibration.
- Postholder must have or acquire a valid driver's license for travel off-site clinics and must be willing to fly by small plane to Cayman Brac on a regular basis.
- The Postholder must be able to work in a high stress environment with frequently changing schedules and priorities and be able to cope with working in close proximity to the sick and dying.

Physical requirements

Must be physically fit, able to lift 50lbs or more. Work in stressful environment.

- Ability to sit, stand, walk, reach with hands and arms, and use hands along with fingers, to handle or feel.
- Ability to lift and/or move up to 25 pounds.
- Specific vision abilities required by this job include clarity of vision both near and far.
- Ability to identify and distinguish colours.

Problem/Key Features

- This is a demanding position balancing multiple tasks simultaneously.
- Potential for exposure to toxic or caustic chemicals
- Potential for exposure to blood borne pathogens

Evaluation Metrics

- Optimal equipment readiness and operation to support patient care delivery with minimal downtime for maintenance.
- Maintenance of records to ensure compliance with Joint Commission requirements
- Development and maintenance of biomedical equipment inventory management system to ensure equipment reliability, parts and stand-by equipment to minimize disruption of patient care.

Approved by:	<i>DSS</i>
Date approved:	<i>30-Dec-2021</i>
Reviewed:	
Next Review	